

PART OF THE SE 1/4, SEC. 10, T.5N., R.1W., S.L.B. & M.

161

# EVANS ACRES

P.R.U.D.

LOTS 5-8

IN WEBER COUNTY

SCALE 1" = 50'

SEE PAGE 160

TAXING UNIT: 25

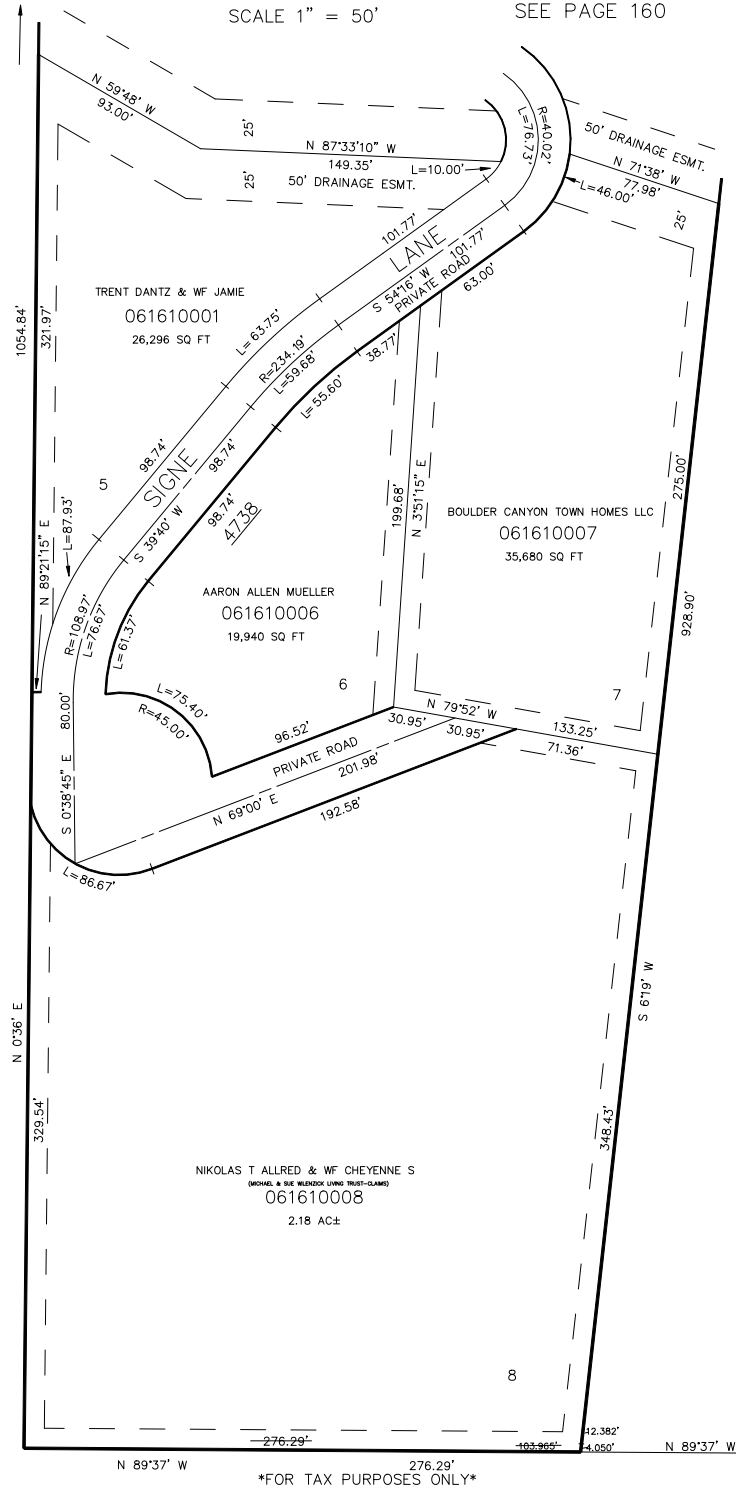
SEE PAGE 96

SEE PAGE 96

FOR COMPLETE ENG DATA SEE  
ORIGINAL DEDICATION PLAT IN  
BOOK 21, PAGE 8 OF RECORDS.

10' UTILITY & DRAINAGE EASEMENTS EACH  
SIDE OF PROPERTY LINES AS INDICATED  
BY DASHED LINES EXCEPT AS OTHERWISE  
SHOWN.

SE COR. OF SEC. 10,  
T.5N., R.1W., S.L.B. & M.



\*FOR TAX PURPOSES ONLY\*

KST 10-90